

OIL-Less Rocking Piston Pumps for better Environment

We try to serve you with high quality & performance.



Vacuum Pumps & Air Compressor Series
AC Version

OIL-Less Rocking Piston Pumps for better Environment

We try to serve you with high quality & performance.

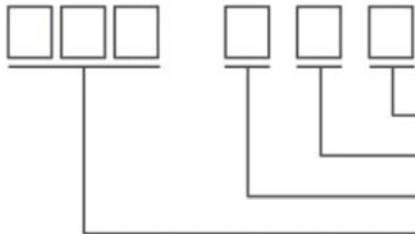
Features ;

- OIL-Less operation & permanently lubricated bearings
- Stainless steel valves and AL Die Casting body
- Completely OIL-Free
- Compact design & Light weight
- Low noise & vibration, leak tight
- Distinguished long life & easy to maintain
- PTFE Coating Model available

Application ;

- Medical, Dental & E.N.T. Equipment
- Oxygen(Nitrogen) Concentrator
- Ozone Generator
- Semi Conductor Processing /Chip Mounter
- Packing Machine / Food Processor
- Environmental Equipment
- Skin Care / Vacuum Massager
- Laser & Plasma Cutting Machine
- Vacuum Tank System for SMT Line
- Fuel Cell System

Selection Guide of Model



- ➔ D : Double head type, S : Single head type
- ➔ N : Normal model, A : Air Compressor only, V : Vacuum pump only
- ➔ R : Rocking Piston Pump, D : Diaphragm Pump, L : Linear Pump
- ➔ Free Flow Rate : LPM (Liters/minutes)



Mini Single Head Series

Model	SINGLE HEAD			
Descriptions	10RNS	12RNS	15RNS	20RNS
Free Flow Rate	8LPM (50Hz) 9.5LPM (60Hz)	10LPM (50Hz) 12LPM (60Hz)	12.5LPM (50Hz) 15LPM (60Hz)	16LPM (50Hz) 19LPM (60Hz)
Max. Vacuum	490 mmHg	540 mmHg	600 mmHg	650 mmHg
Max. Pressure	2.0 bar	2.5 bar	4.4 bar	6.0 bar
Connection	Tubing type (Tube size : Inner diameter must be less than 8mm , 1/8" PT Tap available)			
Dimensions	140(L) x 94(H) x 117(W) mm			
Noise	45~50 dB			
Weight	1.95 Kg (4.3 lb)			
Motor	4 Pole, Capacitor Start, Thermal Protector & Cooling fan			
Motor Power	40W			
Power Source	100~110 VAC (50/60Hz), 200~220 VAC (50/60Hz), 230~240 VAC (50/60Hz)			

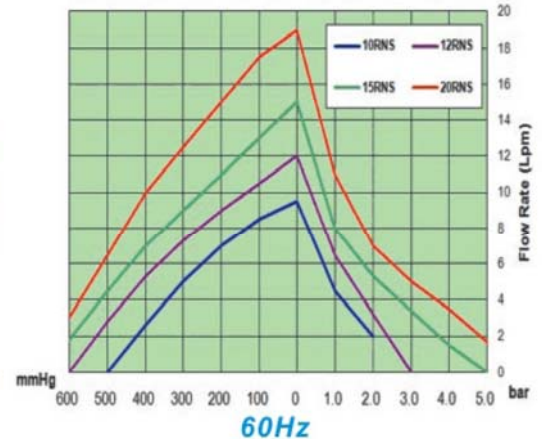
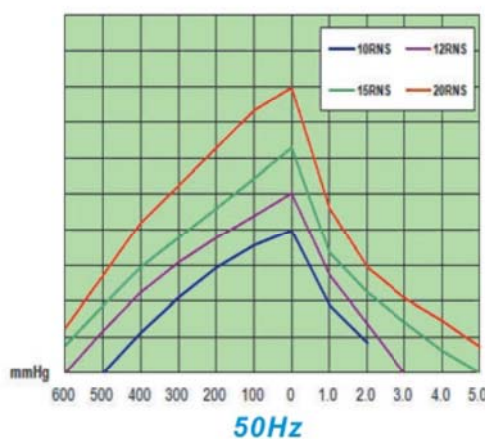
* Please contact with factory for information of [Mini Double Head Type](#).



Single Head type



Double Head type



No.	Description	Material	Q'ty	Remarks
1	Motor Ass'y		1	83 core
2	Pump Body	ADC12	1	
3	Set Screw		1	M5
4	Eccentric		1	
5	Bearing		1	608ZZ
6	Rod	ADC12	1	
7	Teflon Cup	PTFE	1	Yellow
8	Rod Cap	ADC12	1	
9	Rod Screw	STS3	1	M4
10	Body Screw		4	M4
11	Cylinder	AL6061	1	Anodizing
12	O-Ring		1	
13	V/V Plate	ADC12	1	
14	V/V Guide	STS	1	
15	Valve	Silicone	1	White
16	Head	ADC12	1	
17	Rec-Ring	S, rubber	1	Red
18	Head Cap	ADC12	1	
19	Head Screw		4	M4
20	Cooling Fan	P,P	1	Black

Applied Model : 10, 12, 15, 20RNS(RVS, RAS)

OIL-Less Rocking Piston Pumps for better Environment

We try to serve you with high quality & performance.

Single Head Series

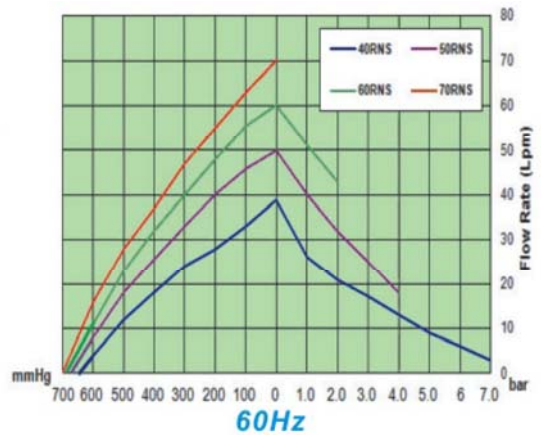
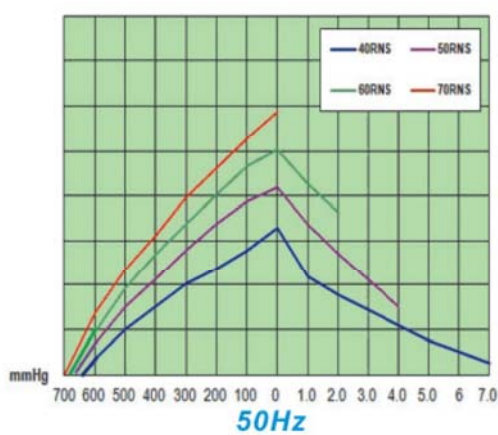
Model	SINGLE HEAD			
Descriptions	40RNS	50RNS	60RNS	70RNS
Head Configuration	Vacuum / Pressure			Vacuum Only
Free Flow Rate	33 LPM (50Hz) 39 LPM (60Hz)	42 LPM (50Hz) 50 LPM (60Hz)	50.5 LPM(50Hz) 60 LPM(60Hz)	59 LPM (50Hz) 70 LPM (60Hz)
Max. Vacuum	650 mmHg	680 mmHg	690 mmHg	700 mmHg
Max. Pressure	7.0 bar	4.0 bar	2.0 bar	N.A.
Connection	R 1/4" (PT 1/4")			
Dimensions	155(L) x 178(H) x 118(W) mm			
Noise Level	50 ~ 53 dB			
Weight	4.2 Kg (9.3 lbs)			
Motor	4 Pole, Capacitor Start, Thermal Protector & Cooling fan			
Motor Power	100 W			
Power Source	100~110 VAC (50/60Hz), 200~220 VAC (50/60Hz), 230~240 VAC (50/60Hz)			



Normal type



PTFE Coating



Dimensions: 118, 100, 145, 150, 19, 117, 108, 84, 139, 4-M6 1/2

No.	Description	Material	Q'ty	Remarks
1	Motor (AC Ver.)		1	110 Core
2	Wire Holder	NBR	1	
3	Rod	ADC12	1	
4	Bearing		1	6006ZZ
5	Eccentric		1	
6	Set Screw		1	M8
7	Teflon Cup	PTFE	1	
8	Rod Cap	ADC12	1	
9	Red Screw	STS	2	M4
10	Cylinder	AL6061	1	Anodizing
11	O-Ring	Silicone	1	
12	Valve washer	STS	1	Small
13	Valve	STS	2	
14	Valve Plate	ADC12	1	
15	Valve washer	STS	1	Large
16	Valve Screw		2	M4
17	Rec-Ring	Silicone	1	Red
18	Head Cap	ADC12	1	
19	Head Screw		4	M6
20	Fan	P,P	1	Black
21	Fan Cover	P,C	1	Black
22	F/C Screw		2	M4

Applied Model : 40, 50, 60, 70RNS(RVS, RAS)

Double Head Series (Serial Connection Type)

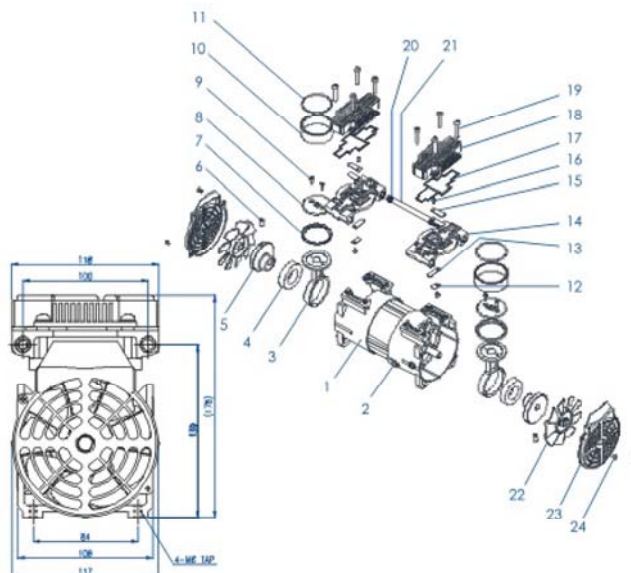
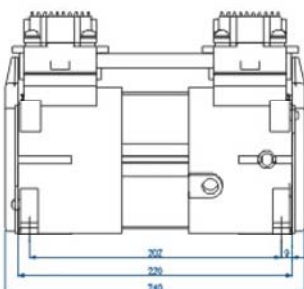
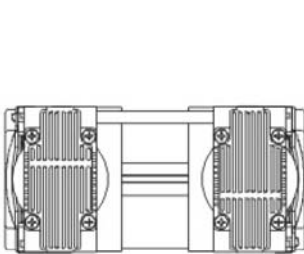
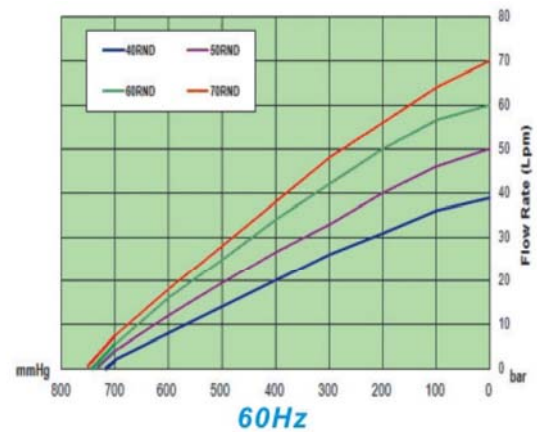
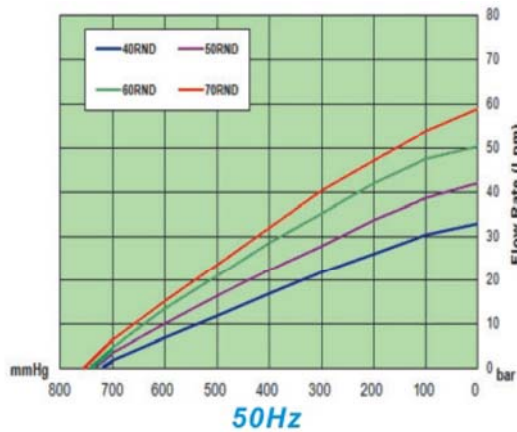
Model	DOUBLE HEAD			
Descriptions	40RND	50RND	60RND	70RND
Head Conneciton	Serial Connection (2-Stage)			
Head Configuration	Vacuum only			
Free Flow Rate	33 LPM (50Hz) 39 LPM (60Hz)	42 LPM (50Hz) 50 LPM (60Hz)	50 LPM (50Hz) 60 LPM (60Hz)	59 LPM (50Hz) 70 LPM (60Hz)
Max. Vacuum	720 mmHg	740 mmHg	745 mmHg	750 mmHg
Max. Pressure	N.A.			
Connection	R 1/4" (PT 1/4")			
Dimensions	240(L) x 178(H) x 118(W) mm			
Noise Level	50 ~ 53 dB			
Weight	7.1 Kg (15.8 lbs)			
Motor	4 Pole, Capacitor Start, Thermal Protector & Cooling fan			
Motor Power	200 W			
Power Source	100~110VAC (50/60Hz), 200~220VAC (50/60Hz), 230~240VAC (50/60Hz)			



Normal type



PTFE Coating



No.	Description	Material	Q'ty	Remarks
1	Motor (AC Ver.)		1	110 Core
2	Wire Holder	NBR	1	
3	Rod	ADC12	2	
4	Bearing		2	6006ZZ
5	Eccentric		2	
6	Set Screw		2	M8
7	Teflon Cup	PTFE	2	
8	Rod Cap	ADC12	2	
9	Rod Screw	STS	4	M4
10	Cylinder	AL6061	2	Anodizing
11	O-Ring	Silicone	2	
12	Valve washer	STS	2	Small
13	Valve	STS	2	
14	Valve Plate	ADC12	2	
15	Valve washer	STS	2	Large
16	Valve Screw		4	M4
17	Rec-Ring	Silicone	2	Red
18	Head Cap	ADC12	2	
19	Head Screw		8	M6
20	O-Ring	Silicone	4	Red
21	Conn. Pipe	AL6063	1	
22	Fan	P.P	2	Black
23	Fan Cover	P.C	2	Black
24	F/C Screw		4	M4

Applied Model : 40, 50, 60, 70RND(RVD)

OIL-Less Rocking Piston Pumps for better Environment

We try to serve you with high quality & performance.

Double Head Series (Parallel Connection Type)

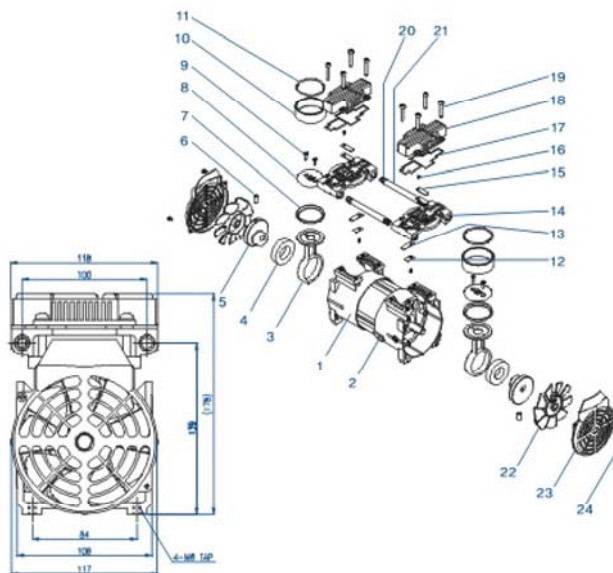
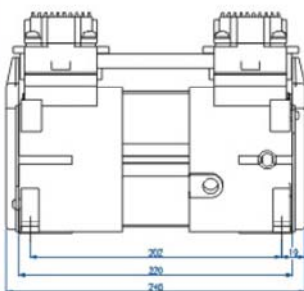
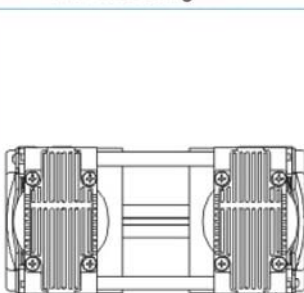
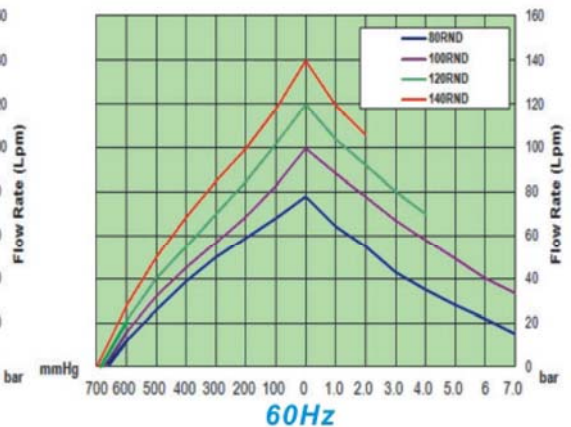
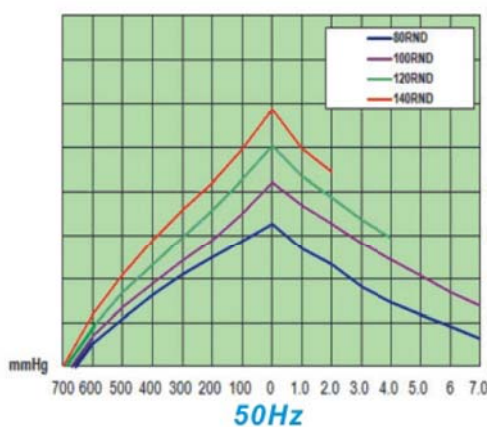
Model	DOUBLE HEAD			
Descriptions	80RND	100RND	120RND	140RND
Head Conneciton	Parallel Connection (1-Stage)			
Head Configuration	Vacuum / Pressure			
Free Flow Rate	66 LPM (50Hz) 78 LPM (60Hz)	84 LPM (50Hz) 100 LPM (60Hz)	101 LPM (50Hz) 120 LPM (60Hz)	118 LPM (50Hz) 140 LPM (60Hz)
Max. Vacuum	650 mmHg	680 mmHg	690 mmHg	700 mmHg
Max. Pressure	7 bar	7 bar	4 bar	2 bar
Connection	R 1/4" (PT 1/4")			
Dimensions	240(L) x 165(H) x 118(W) mm			
Noise Level	55 ~ 58 dB			
Weight	7.1 Kg (15.8 lbs)			
Motor	Capacitor Start, Equipped with Termal Protector & Inner Cooling Fan			
Motor Power	200 W			
Power Source	100~110 VAC (50/60Hz), 200~220 VAC (50/60Hz), 230~240 VAC (50/60Hz)			



Normal type



PTFE Coating

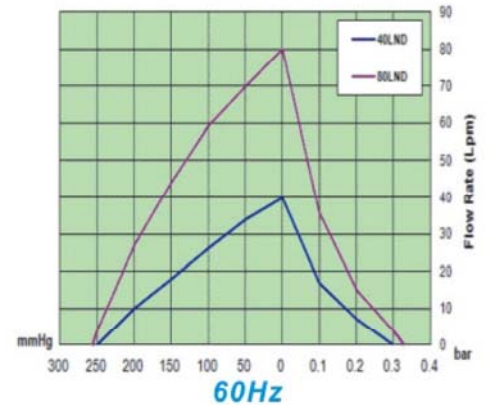
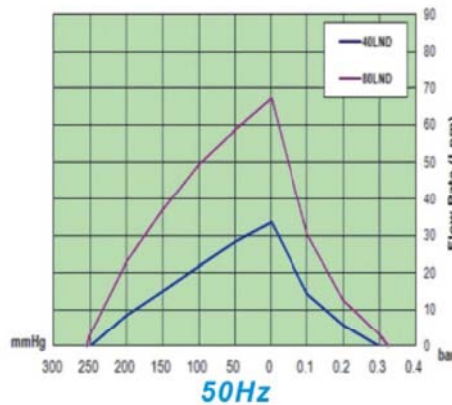


No.	Description	Material	Q'ty	Remarks
1	Motor (AC Ver.)		1	110 Core
2	Wire Holder	NBR	1	
3	Rod	ADC12	2	
4	Bearing		2	6006ZZ
5	Eccentric		2	
6	Set Screw		2	M8
7	Teflon Cup	PTFE	2	
8	Rod Cap	ADC12	2	
9	Rod Screw	STS	4	M4
10	Cylinder	AL6061	2	Anodizing
11	O-Ring	Silicone	2	
12	Valve washer	STS	2	Small
13	Valve	STS	2	
14	Valve Plate	ADC12	2	
15	Valve washer	STS	2	Large
16	Valve Screw		4	M4
17	Rec-Ring	Silicone	2	Red
18	Head Cap	ADC12	2	
19	Head Screw		8	M6
20	O-Ring	Silicone	8	Red
21	Conn. Pipe	AL6063	2	
22	Fan	P.P	2	Black
23	Fan Cover	P.C	2	Black
24	F/C Screw		4	M4

Applied Model : 80, 100, 120, 140RND(RVD)

OIL-Less Linear Pumps Series

Model	40LND	80LND
Free Flow Rate	34 LPM (50Hz) 40 LPM (60Hz)	67 LPM (50Hz) 80 LPM (60Hz)
Max. Pressure/Vacuum	0.3 Bar / 250 mmHg	0.33 Bar / 260 mmHg
Dimensions	126(W) x 95(D) x 84(H) mm	178(W) x 129(D) x 108(H) mm
Power Consumption	40 W	80 W
Weight	1.0 Kg	2.2 Kg



Water pump Series (Magnetic Type)

Specifications	Model Name			
	3WNS	4WNS	8WNS	10WNS
Max. Capacity(LPM @ open flow)	3.5	4	8.5	10
Max. Head (cm)	110	120	180	230
Min. Ambient Temp. (°C)	0	0	0	0
Max. Current at Rated Load (A)	0.1	0.1	0.25	0.35
Max. Ambient Temp. (°C)	40	40	40	40
Liquid Temperature (°C)	0~90	0~90	0~90	0~90
Net Weight (Kg)	0.39	0.47	0.97	1.2
Insulation Class	E			
Port Size (φ)	O.D φ 10			
Voltage (V)	AC 220V 50/60Hz (AC 100V 50/60Hz , AC 120V 60Hz , AC 230V 50Hz)			
Motor Poles	2P			
Thermal Protector	120°C			
Motor Type	Shaded pole induction Motor			



Available Accessories

Mufflers and accessories



AL Die casting body muffler with filters
Provided as a standard accessory.



Pressure Switch



Safety Valve



Other material & performance
mufflers, Provided on request.



Rubber Foot



Spring Mount

Core parts



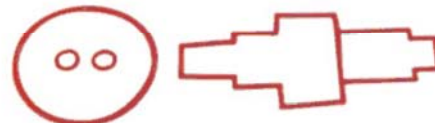
Stainless steel valve



Piston Ring (Teflon)



Permanently lubricated bearings
6203ZZ for motor shaft
6006ZZ for eccentric



O-rings made by 100% of Silicone Rubber
We never use gasket made by paper or asbestos



G&M Tech Inc.
(주) 지엔엠텍

Room, No. 404, DFV, 1 Cha, #1030, Jung-Dong, Giheung-Gu,
Yongin-City, Korea

TEL : +82-31-459-8221 FAX : +82-31-459-8611

Home Page : www.gnmtechinc.com / gnmtechinc.en.ec21.com

E-MAIL : info@gnmtechinc.com

Distributor

To improve, the specifications & design on catalog can be changed without notice.
For OEM specifications, please come in contact with factory.