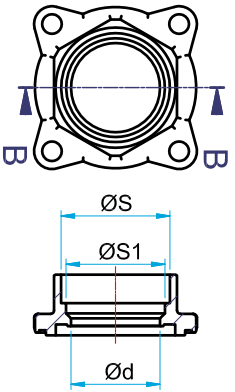
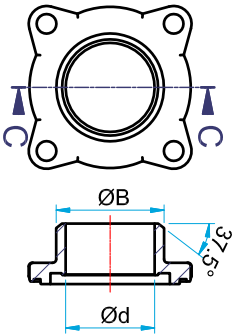


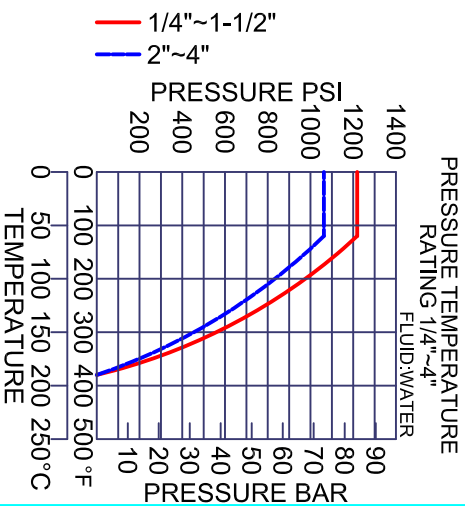
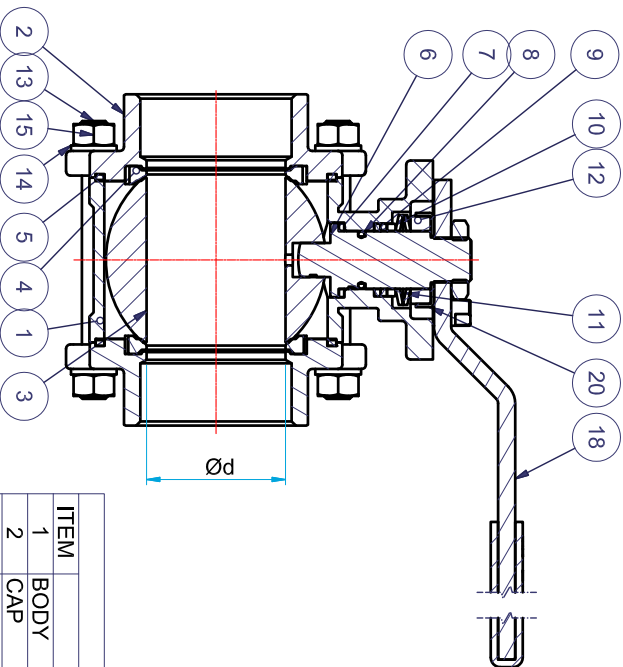
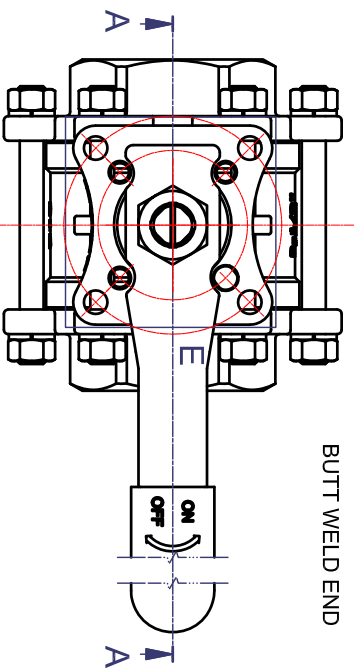
SIZE	Ød	L	H	H1	W	ØB	ØS	ØS1	ØA	ØB	M1	M2	Q	Cv FACTOR	TORQUE(kgf-cm)
2-1/2"	65	156	101.5	18	322.5	76.3	73.8	70.9	70	102	Ø9	Ø11	17	265	400
3"	80	182	112.5	18	322.5	93	89.8	82.5	70	102	Ø9	Ø11	17	415	660
4"	100	213.6	127	18	322.5	114	115.4	108	70	102	Ø9	Ø11	17	780	900



SOCKET WELD END

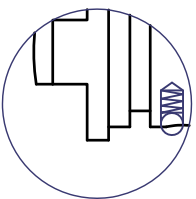
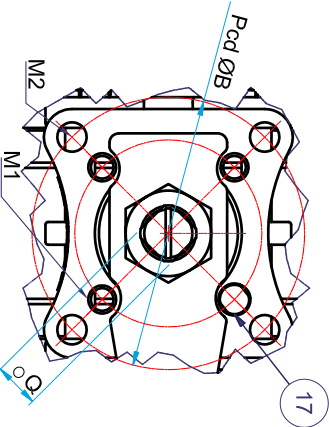
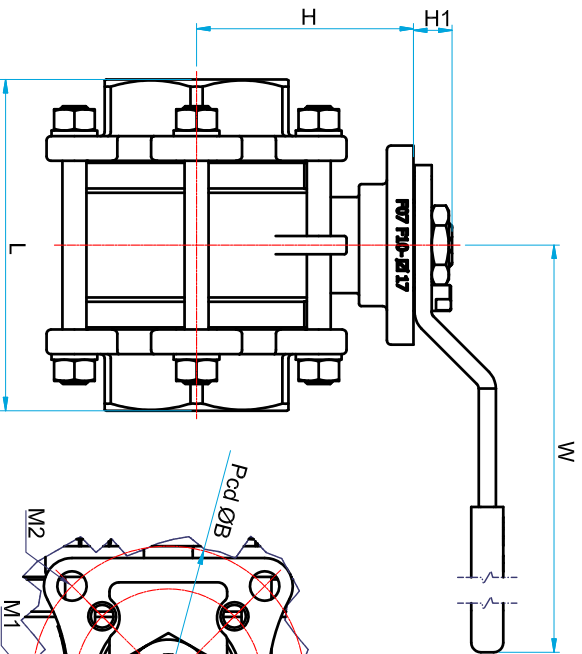


BUTT WELD END



SPARE PARTS FORM

ITEM	PARTS	Q.TY	MATERIALS V3NMH	MATERIALS V3NMH-C
1	BODY	1	ASTM-A351-CF8M	ASTM-A216-WCB
2	CAP	1	ASTM-A351-CF8M	ASTM-A216-WCB
3	BALL	1	ASTM-A351-CF8M	ASTM-A351-CF8
4	BALL SEAT	2	PTFE	PTFE
5	JOINT GASKET	1	PTFE	PTFE
6	STEM	1	AISI 316	AISI 316
7	THRUST WASHER	1	PTFE	PTFE
8	O-RING	1	VITON	VITON
9	STEM PACKING	1-2	PTFE	PTFE
10	STEM RING	1	AISI 304	AISI 304
11	BELLEVILLE WASHER	2	AISI 304	AISI 304
12	STEM NUT	2	AISI 304	AISI 304
13	BOLT	6	AISI 304	AISI 304
14	SPRING WASHER	12	AISI 304	AISI 304
15	HEX NUT	12	AISI 304	AISI 304
17	STOPPER PIN	1	AISI 304	AISI 304
18	HANDLE	1	AISI 430	AISI 430
19	PLASTIC COVER	1	PLASTIC	PLASTIC
20	LOCK WASHER	1	AISI 304	AISI 304



Type **V-3MH**

Rev.	Date	Description	Type	Rev.		
Checked	Morris	Scale	Fit	Date	2015/05/15	4
Drawn	Charles	3-PIECE MOUNTING PAD FULL PORT BALL VALVE			Unitmm	