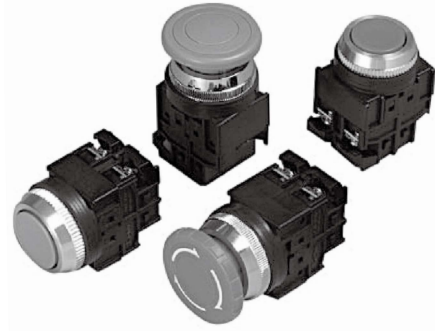


PUSH BUTTON SWITCH **KPB25/30 Series**



CONTROL COMPONENTS

MICRO SWITCH

FOOT SWITCH

LIMIT SWITCH

POWER SWITCH

HOIST SWITCH

CAM SWITCH

CLASSIFICATION

KPB25 W M - R 1 1  
 ① ② ③ ④ ⑤ ⑥

① PANEL CUT	25	φ 25
	30	φ 30
② PROTECTION	无	IP40
	W	IP65
③ ACTUATOR	M	PUSH BUTTON, MOMENTARY
	MS	SELECTABLE PUSH BUTTON
	ML	SELECTABLE PUSH BUTTON
	AT	PUSH BUTTON, MAINTAINED
	EM	MUSHROOM HEADED PUSH BUTTON, MOMENTARY
	EA	MUSHROOM HEADED PUSH BUTTON, MAINTAINED
	ER	PUSH BUTTON, TURN TO RESET
	EP	PUSH BUTTON, PULL TO RESET
④ COLOR		RED
		GREEN
		YELLOW
		BLUE
		WHITE
		BLACK
⑤ CONTACTS	NUMBER	NUMBER OF NO CONTACT
⑥ CONTACTS	NUMBER	NUMBER OF NC CONTACT

## Dimensions

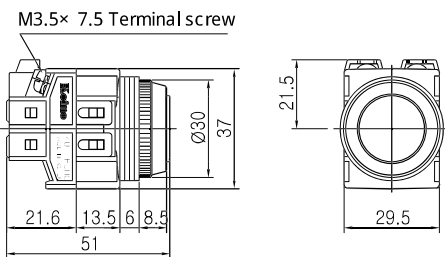
KPB25(W)M  
KPB30(W)M

KPB25(W)AT  
KPB30(W)AT

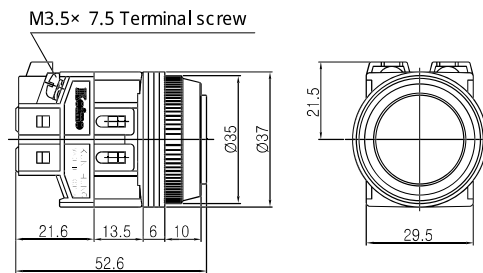
KPB25(W)EM KPB30(W)EM  
KPB25(W)EA KPB30(W)EA  
KPB25(W)EP KPB30(W)EP



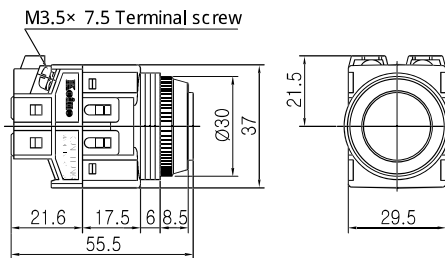
KPB25(W)M



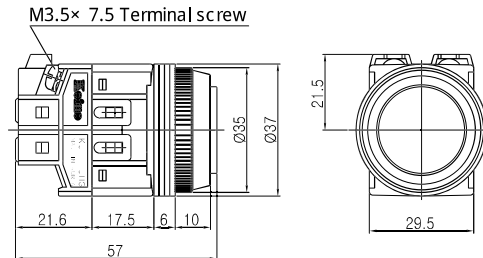
KPB30(W)M



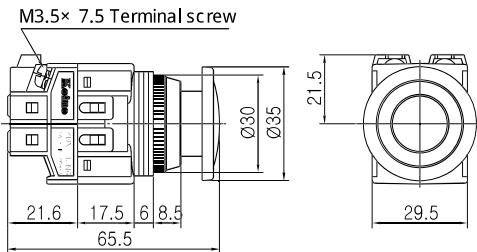
KPB25(W)AT



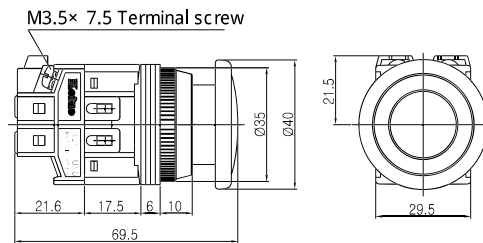
KPB30(W)AT



KPB25(W)EM  
KPB25(W)EA  
KPB25(W)EP



KPB30(W)EM  
KPB30(W)EA  
KPB30(W)EP

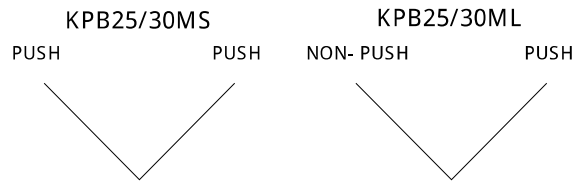


## Dimensions

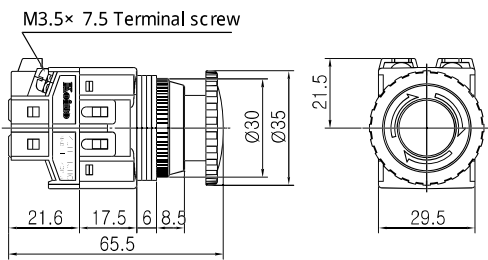
KPB25(W)ER  
KPB30(W)ER



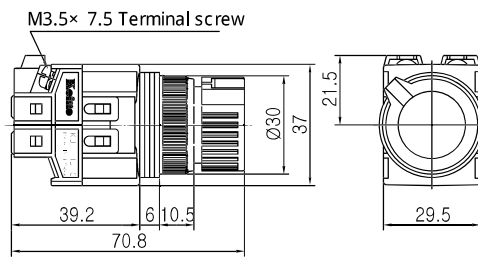
KPB25MS KPB30MS  
KPB25ML KPB30ML



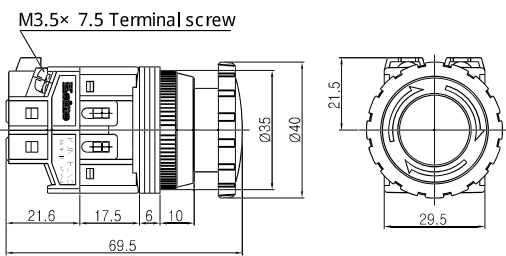
KPB25(W)ER



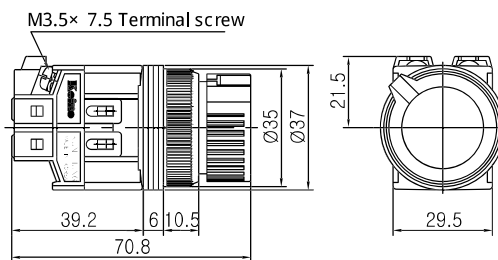
KPB25MS  
KPB25ML



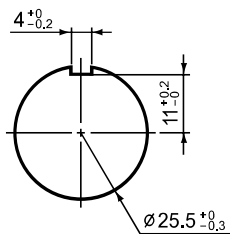
KPB30(W)ER



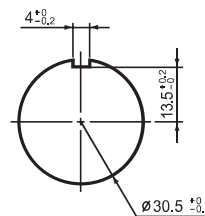
KPB30MS  
KPB30ML



KPB25



KPB30



CONTROL COMPONENTS

MICRO SWITCH

FOOT SWITCH






LIMIT SWITCH

POWER SWITCH

HOIST SWITCH

CAM SWITCH

## DISASSEMBLING KPB25MS/ML

	1. Insert screw driver between knob and indicator		2. Release lock by lifting indicator
	3. Place indicator on the 2nd lock position		
	4. Release knob ring		5. Twist installation ring

## Specification

Switching System	The switching element of KPB25, KPB30 is equipped with normally open contact and normally closed contact.							
Material	Contact	Silver alloy + Copper	Housing	BODY: Nylon glass CONTACT HOUSING: Nylon glass	Buttons	Acetal	Ring	ABS
Mechanical Lifetime	1,000,000 Cycles of operation							
Install	Tightening torque : Max. 0.8N · m							
Standards	This product comply with “ Standards for low- voltage switching devices” EN IEC 60947- 5- 1							
Contact Ratings	250VAC 6A (resistive load)							
Insulation Resistance	Minimum 100MΩ (500VDC)							
Contact Resistance	Maximum 30mΩ							
Electrical Lifetime	100,000 cycles of operation							
Dielectric Strength	Between Live Parts: 1,500VAC(50/60Hz) for 1 minute Between Live and Dead Parts: 1,500VAC(50/60Hz) for 1 minute							
Operational Temperature	- 25° C □+ 50° C							
Operational Humidity	45 □85%RH							
Protection Degree	IP40 / IP65(“ W” type)							
Shock Resistance	Approximately 50G(500m/s <sup>2</sup> )							
Vibration Resistance	10 □5Hz double amplitude 1.5mm (at X, Y and Z axis)							
Approbations	UL, CCC, KC							
Declaration of Conformity	CE							